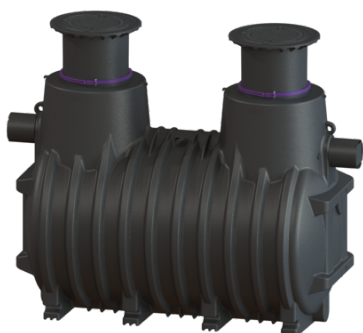


## EasyOil oil/fuel separator ground, NS 20, Sys. B, 5800 l, class B



### Article information

Item no.: 99620.80B  
 GTIN: 4026092058930  
 Price group: 60

### Advantages

- Permanent leak tightness up to ground level
- Resistant to and suitable for up to 100 % share of biodiesel (FAME)
- Suitable for filling stations with high-performance filling pumps, E10 and biodiesel fuels

### Description

The separator for light liquids is suitable for installation in the ground. The collecting tank made of permanently resistant polymer (PE) is equipped with an integrated sludge trap and an automatic closure device. One or more surface water resistant covers makes easy access possible for cleaning and maintenance work. A load distribution slab must be installed on site for load class D. The reinforcement drawings are available from KESSEL. On-site connection to inlet and outlet with PE-HD pipes according to DIN 19537, PVC pipes according to DIN 19534, PP or AS on factory stainless steel pipe sockets possible. When selecting the appropriate seals and pipe materials, the applicable standards must be observed. 20 year polyethylene warranty.

#### Variant

Nominal size (NS):	20
Type of disposal:	manual with suction hose
Coalescence insert:	no
Load-bearing capacity (DIN 19901):	E2

#### General characteristics

Material:	PE
Installation situation:	underground installation
Delivery state:	Installation-ready (connection parts must be connected on site)
Inlet max. scoring (DN):	Z-83.8-55
Separator class:	System B (formerly class II)
Range of applications for light liquids:	from 0.85 to 0.95 g/cm3

#### Dimensions

Net weight:	595 kg
-------------	--------

Gross weight:	595 kg
Groundwater resistant from lower edge of base section:	1810 mm
Excess depth:	130 mm
Load-bearing capacity (DIN 19901):	700 - 1.800
4MS common composition list:	180
Max. length:	3460 mm
Installation depth:	870 - 1250 mm
Vertical adjustment:	vertically adjustable upper section, can be tilted by 5 degrees
Required access area, length:	3110 mm
Required access area, width:	1760 mm
Packaging dimension:	length
Packaging dimension:	width
Packaging dimension:	height
Tank/drain body	
Distance pipe bottom outlet to tank bottom:	1600 mm
Distance pipe bottom inlet to tank bottom:	1630 mm
Outlet nominal size (OD):	200 mm
Outlet nominal size (DN):	200 mm
Inlet nominal size (DN):	200 mm
Inlet nominal size (DN):	200 mm
Clear width of entry (LW):	600 mm
Coverage features	
Type of cover:	Cover plate
Cover material:	Grey iron
Colour of cover:	black
Width of cover:	648 mm
Height of cover:	95 mm
Length of cover:	648 mm
Cover locking:	unlocked
Load class:	B 125 (EN 124)
Tightness:	odour-tight and surface water resistant
Wastewater contents	
Total volume:	5800 l
Hose:	4000 l
Sealing water height:	470 l
Control	
Control unit:	no