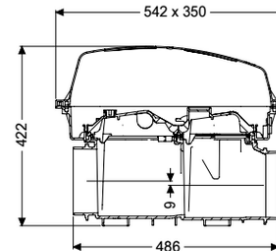
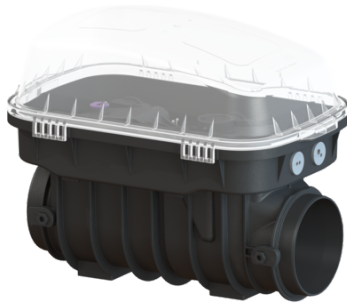


## Controfix clean out w/o socket, exposed



### Article information

Item no.: 80000  
 GTIN: 4026092053812  
 Price group: 30

### Advantages

- Simple conversion to Staufix SWA
- Fast, simple and toolless maintenance
- Quick and toolless access for cleaning

### Description

The Premium clean out for faecal and faecal-free wastewater makes easy access to wastewater pipes possible for inspection and maintenance work. Thanks to the modular KESSEL system, existing systems can easily be converted to a Staufix SWA Premium backwater valve, Staufix FKA or Pumpfix F backwater pumping station.

#### General characteristics

Colour:	black
Type of wastewater:	for wastewater with and without sewage
Installation situation:	exposed drainage pipe
Delivery state:	Modular set for assembly on site

#### Dimensions

Net weight:	6,78 kg
Gross weight:	8,28 kg
Vertical drop between inlet and outlet:	9 mm
Length:	486 mm
Width:	350 mm
Height:	422 mm
Packaging dimension:	length
Packaging dimension:	width
Packaging dimension:	height

#### Tank/drain body

System:	optional
---------	----------

**Coverage features**

Type of cover:

Cover material:

Colour of cover:

Width of cover:

Height of cover:

Length of cover:

Cover locking:

Protective cover

Polymer

transparent

350 mm

165 mm

542 mm

Clip closure